

AMERICAN RESERVATIONS
205 Meeting Street, Charleston, SC 29401
United States of America
Tel: +1 800 524 2420 (Toll Free) Fax: +1 843 937 9036
Email: reservations.us@belmond.com

EUROPEAN RESERVATIONS
Shackleton House, 4 Battle Bridge Lane,
London, SE1 2HP
United Kingdom
Tel: 0845 077 2222 or +44 (0)20 3117 1300
Fax: +44 (0)20 7921 4708
Email: reservations.uk@belmond.com

SOUTHEAST ASIAN AND AUSTRALASIAN RESERVATIONS
100 Beach Road, #34-01/02, Shaw Tower, Singapore 189702
Tel: +65 6395 0678 Fax: +65 6392 3600
Email: reservations.singapore@belmond.com

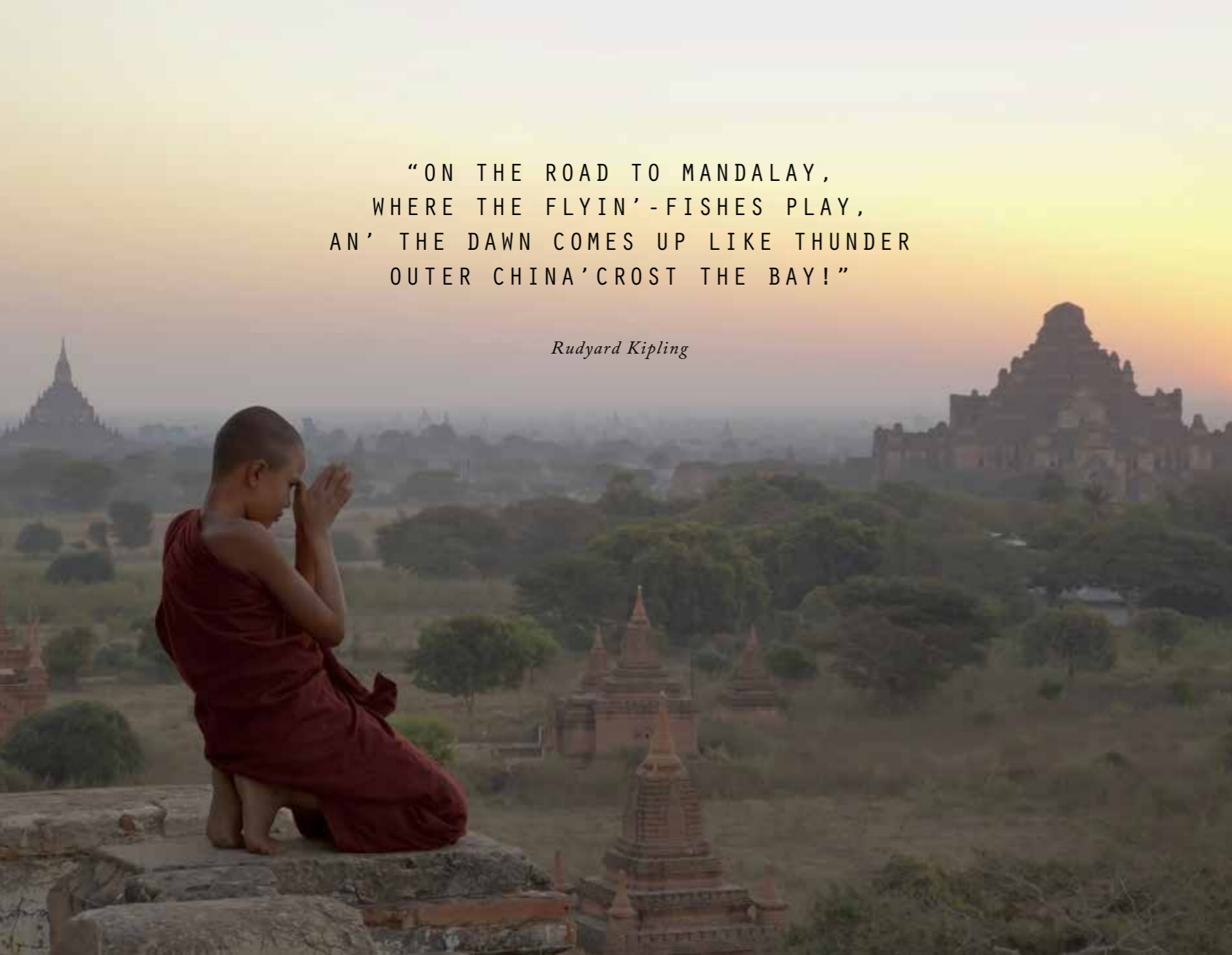
BELMOND.COM/ROADTOMANDALAY

UNLIKE ANY LAND YOU KNOW


BELMOND
ROAD TO MANDALAY
MYANMAR

“ON THE ROAD TO MANDALAY,
WHERE THE FLYIN’-FISHES PLAY,
AN’ THE DAWN COMES UP LIKE THUNDER
OUTER CHINA’CROST THE BAY!”

Rudyard Kipling





EXPERIENCE
MYANMAR

Chapter One

*With its ancient temples, floating gardens and majestic rivers,
Myanmar is a land almost untouched by the modern world*

THE MAGIC OF MYANMAR

Cruise along the mighty Ayeyarwady River to explore ancient sites, visit timeless villages and meet wonderful local people

A land of spectacular scenery and golden pagodas, Myanmar is home to a proud and welcoming people. The country ranges from snow-peaked mountains and deep forests to unspoilt beaches, ancient architectural sites, villages and vibrant towns.

Enjoying the slower pace of life among the traditional arts, crafts and culture, visitors will feel as if time has stood still. With more than 100 different ethnic groups — each sporting their

own costumes and customs, displayed in festivals throughout the year — Myanmar is a melting pot of colour and energy.

All this and much more can best be absorbed from the decks of our luxurious river cruiser, Belmont Road to Mandalay. As we have been operating in Myanmar for more than 20 years, we have built an unrivalled wealth of expertise and are pioneers of luxury cruising in this fascinating country.





The ancient city of Bagan features thousands of Buddhist temples spread across a sun-baked plain, some vast and ornate, others in evocative ruins. For an unforgettable experience, you can embark on a champagne sunrise balloon ride to view this ancient site and its glistening pagodas.

Myanmar's second largest city, Mandalay, is its cultural and spiritual heartland. Once the setting for King Mindon's court, it is now also the home of the 10 Burmese Traditional Arts. Glimpse the old city along dusty lanes lined with marble carvers and learn the art of bronze casting, or experience local culture and participate in an almsgiving at a monastery.

As the gateway to the country for most international visitors, Yangon offers an excellent introduction to Myanmar. Set on the Yangon River, this colourful city is a melting pot of diverse cultures and customs. It is home to the renowned, jewel-encrusted Shwedagon Pagoda and to **Belmond Governor's Residence**, a tranquil garden hotel.

Yet the heart of Myanmar life is the Ayeyarwady River along whose mighty length unfold scenes of timeless cities, venerated shrines and day-to-day living. Small fishing boats contend with barges, women lay out washing to dry, blooming shrubs give way to dense forest. Look out for kingfishers, egrets and the rare Ayeyarwady dolphin.

WELCOME
ON BOARD

Chapter Two

*As the world glides past, relax and enjoy fine dining,
stunning scenery and an ever-helpful, friendly crew*





NEW HORIZONS

With cool spaces in which to mingle, luxurious cabins and indulgent touches, a great journey lies ahead

Life on board is an exciting but also relaxing experience; our 82 guests become part of the family. From the moment you step on board, you enjoy the unobtrusive attention of our experienced and friendly staff. Add to that the fine cuisine from our Executive Chef, an onboard guide team, daily entertainment, topical lectures by local and international experts, cooking classes, yoga on deck and a spa and exercise room, and you have an all-round unforgettable experience. We are also the only river cruiser operating in the area with our own onboard doctor.

Our dining experiences comprise the Restaurant, offering both Eastern and

Western cuisine, and the outdoor area on the Observation Deck, Road to Mandalay Grill, opens for one night per trip, offering local grilled specialities, live music and fine wines. Every Friday and Saturday night, the Road to Mandalay Grill, also opens to outside guests, representing the only five-star dining venue in Bagan.

Our two bars — the Piano Bar and the Observation Deck Bar — are relaxing spaces in which to mingle with fellow travellers. The outdoor pool area is located on the Observation Deck, the largest outdoor space of any river cruise in Myanmar. It has recently been refurbished to reflect a contemporary and local ambience.



Our graceful river cruiser, designed with passengers' comfort in mind, reflect local styles and materials in its elegant interiors. The cabins feature luxurious furnishings by local artisans, including a hand-tiled jade feature wall in our Deluxe and State Cabin bathrooms. All

cabins enjoy outward-facing windows — to make the most of the fantastic views — satellite TV, air-conditioning, generous closet space and spacious en-suite bathrooms with locally made soaps and an iPod docking station. Complimentary bottled water is replenished daily.



CABIN PLANS

Our en-suite cabins provide a cosy and sophisticated haven in which to relax and savour the glorious scene

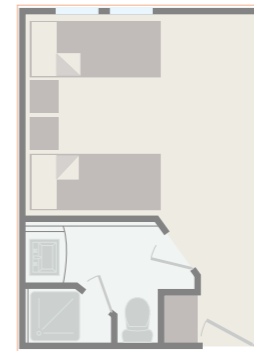
Across four decks, there are five categories of cabins: Single, Superior, Deluxe and State Cabins, plus the lavish Governor's Suite, with its own butler service and sitting room.



GOVERNOR'S
SUITE



STATE
CABIN



DELUXE
CABIN



SUPERIOR
CABIN



SINGLE
CABIN

ILLUSTRATIONS NOT TO SCALE



SUPPORTING MYANMAR COMMUNITIES

One of the most beguiling aspects of Myanmar is its people, whose openness and warmth make an enduring impression on our guests. Belmond is dedicated to giving back to these people and to ensuring that their country remains a place of beauty for years to come. With the help of generous donations from guests and volunteering programmes run by our staff, Belmond actively contributes to local communities. We have recently helped construct an infant playschool and middle school in Shwe Kyet Yet village and opened a new school building in the village of Pon, near Bagan. We have now supported a total of 21 schools along our cruise routes since our company started working in Myanmar in 2015. Through the passion and dedication of our onboard doctor, Dr Hla Tun, in 2011 we opened a free medical clinic in Bagan which has treated more than 40,000 patients. Our chefs help the monks of a nearby monastery to prepare a free lunch for the patients and their families. Guests aboard Belmond Road to Mandalay can visit this clinic to meet the team at work. Finally, as part of our commitment to the environment, we operate a recycling programme to help safeguard Myanmar's majestic landscapes.



YOUR
JOURNEY

Chapter Three

*Connect with the local culture, enjoy exclusive experiences and
discover the real Myanmar while river cruising with us*

THE JOURNEYS

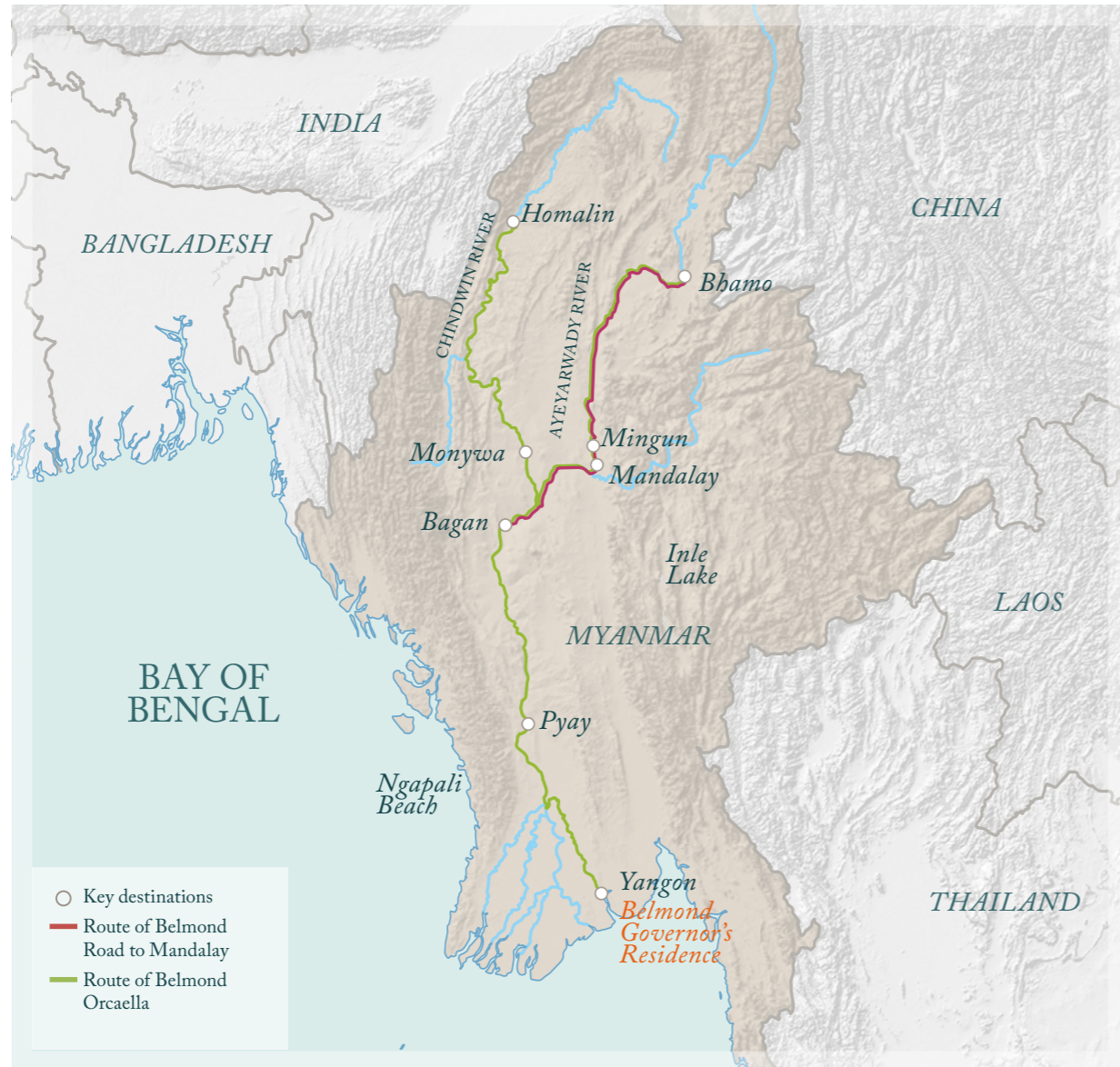
Journey on board Belmond Road to Mandalay with internal flights between Yangon and the ship, transfers from the airport to the ship (not included for Ayeyarwady Experience and Taste of Myanmar), meals, excursions and guides all included. In addition to tours to the region's highlights, Belmond Road to Mandalay offers a choice of additional excursions for active pursuits, or to experience the arts, cuisine or culture of Myanmar

JOURNEYS

- Gorges of the Far North
- Images of a Golden Land
- Highlights of Myanmar
- Ayeyarwady Experience
- Taste of Myanmar

For more information and prices, please visit belmond.com/roadtomandalay

The rivers of Myanmar vary from season to season, with as much as a 30ft variance in water level. From January through June, the Ayeyarwady's levels may drop for a few weeks to a few months, creating a narrower channel for navigation. To allow for these changes, Belmond Road to Mandalay may operate a revised itinerary and mooring locations may be amended.



Routes shown are for guidance only and are subject to change

GORGES OF THE FAR NORTH

MANDALAY - BHAMO - BAGAN
11 NIGHTS

An adventurous voyage providing an in-depth exploration of Myanmar

DAY 1 Fly from Yangon to Mandalay and visit the spiritual hills of Sagaing en route to the ship. Set sail for Mingun.
DAY 2 Sunrise yoga on the Observation Deck. Visit Nwe Nyein to see traditional clay-pot making and enter the first of three gorges of the Upper Ayeyarwady.
DAY 3 Stroll around the riverside village of Kyan Hnabt. Choose to join our resident doctor in visiting a rural school and donate school supplies.
DAY 4 Follow in the footsteps of George Orwell in the outpost of Katha and visit locations from his novel, *Burmese Days*.
DAY 5 Visit Shwe Paw Island. Sail through the second, most dramatic gorge before arriving at Bhamo's market town.
DAY 6 Visit Weima Elephant Camp and see the daily life of a mahout. An exclusive dinner is arranged in a colonial home near Katha.

DAY 7 Travel through the teak forests on a specially-chartered train to Naba. Mingle with fellow guests at a longyi cocktail party on board in the evening.
DAY 8 Visit Ma Lae and witness a traditional novitiation ceremony.
DAY 9 Return to Mandalay and explore city's treasure and arts with your guide.
DAY 10 Participate in an alms-giving to monks and set sail for Bagan. Sunset temple tour and an exclusive candle-lighting offering.
DAY 11 Visit the best of Bagan with the option to tour by bicycle. Tour to Mount Popa and its summit monastery.
DAY 12 Return flight to Yangon.
2017 departure dates: August 30; September 14, 28



NOVICE MONKS AT THE HSINBYUME (MYATHEINDAN) PAGODA, MINGUN

IMAGES OF A GOLDEN LAND

BAGAN - MANDALAY
4 NIGHTS

From spiritual Sagaing to the enigmatic ruins of Mingun, cruise along the Ayeyarwady River from Bagan to Mandalay

DAY 1 Guests arriving into Bagan visit a bustling market and temple with fine views en route to Belmond Road to Mandalay. After lunch on board, visit Ananda, one of Bagan's most magnificent temples. The day ends watching the sun set, then dinner is served under the stars.
DAY 2 Go on an adventure of your choice: a bicycle or horse-and-cart ride around the temples of Old Bagan, a hot-air balloon flight, a sunrise temple tour or a village community project then relax as we sail towards Mandalay.
DAY 3 Arrive in Mingun and choose from two tours: discover its historical sites or join a walk through a rural village. In the evening you are invited to wear a traditional sarong to our cocktail party on the Observation Deck.
DAY 4 Early risers can participate in a Buddhist almsgiving ceremony on shore, then either visit historic sites around Mandalay or explore the city's renowned traditional crafts. Enjoy a farewell dinner and acrobatic show on board.
DAY 5 Disembark for your onward travel arrangements.

2017 departure dates: January 07, 14, 21, 28; February 04, 11, 18, 25; March 04, 11, 18, 25; April 01; August 19, 26; September 02, 09, 16, 23, 30; October 07, 14, 21, 28; November 04, 11, 18, 25; December 09, 16

HIGHLIGHTS OF MYANMAR

MANDALAY - BAGAN
3 NIGHTS

From majestic Mandalay to breathtaking Bagan, cruise along the Ayeyarwady River

DAY 1 Visit the Sagaing Hills en route to the ship. Board the ship at Shwe Kyet Yet village near Mandalay. Enjoy an afternoon exploring Mandalay's key sites and traditional arts. Your last visit of the day will be to the renowned and amazing teak U Bein Bridge at sunset. Return back on board for dinner.

DAY 2 Join a Buddhist almsgiving ceremony and experience village life near our jetty before the ship sets sail. Alight in Ava to explore the ancient capital. Take a traditional horse-and-cart tour or embark on a bike ride.

DAY 3 Rise early to attend a soothing meditation session before the ship arrives in Bagan, giving you the opportunity to explore the magnificent, temple-strewn plain. End your visit by watching the sunset over the plains, then dine under the stars on the Observation Deck.

DAY 4 Early risers can experience a sunrise hot-air balloon flight before disembarking for onward travel.

2017 departure dates: January 04, 11, 18, 25; February 01, 08, 15, 22; March 01, 08, 22, 29; August 16, 23, 30; September 06, 13, 20, 27; October 04, 11, 18, 25; November 01, 08, 15, 22, 29; December 13, 20

belmond.com/roadtomandalay



A TRANQUIL TRIP ACROSS THE RIVER



LOCAL WOMEN CARRY GOODS IN BAGAN

AYEYARWADY EXPERIENCE

BAGAN - MANDALAY
2 NIGHTS

Cruise in style along the Ayeyarwady River, alighting to explore and enjoy local customs

DAY 1 Board the ship at Bagan. Those who arrive early can explore the magnificent temple complex by mountain bike, horse and cart or hot-air balloon. As the ship sails towards Mandalay, enjoy onboard activities. In the evening, dine on Asian and Western specialities in the Restaurant.

DAY 2 During the morning's sailing enjoy a sunrise yoga session, a meditation class, or a Myanmar cookery demonstration. Arriving in Mingun, choose to visit the historical sites of Mingun or join a walk through a rural village. In the evening you are invited to wear a traditional sarong to our cocktail party on the Observation Deck.

DAY 3 Early risers may wish to join in a Buddhist almsgiving ceremony in Mandalay. All guests disembark for your onward travel arrangements.

2017 departure dates: January 08, 15, 22, 29; February 05, 12, 19, 26; March 05, 12, 19, 26; April 02; August 20, 27; September 03, 10, 17, 24, 31; October 08, 15, 22, 29; November 05, 12, 19, 26; December 10, 17

belmond.com/roadtomandalay

TASTE OF MYANMAR

MANDALAY - BAGAN
2 NIGHTS

Discover a land barely touched by time on this condensed tour, including the temples of Bagan

DAY 1 Board the ship at Shwe Kyet Yet village near Mandalay. Arrive early to participate in a Buddhist almsgiving ceremony before sailing. Disembark in Ava to explore the ancient capital. As the ship sails to Bagan, enjoy onboard activities then dine on Asian and Western cuisine in the elegant Restaurant.

DAY 2 Explore the magnificent, temple-strewn plain and visit local temples. In the afternoon visit Ananda, one of Bagan's most magnificent temples, and explore an off-the-beaten-track temple by torchlight. End your visit by watching the sunset over the plains. Dine under the stars on the Observation Deck.

DAY 3 Dawn risers can experience a sunrise hot-air balloon flight over the pagodas before disembarking for onward travel arrangements.

2017 departure dates: January 05, 12, 19, 26; February 02, 09, 16, 23; March 02, 09, 23, 30; August 17, 24, 31; September 07, 14, 21, 28; October 05, 12, 19, 26; November 02, 09, 16, 23, 30; December 14, 21

belmond.com/roadtomandalay

EXTEND THE
EXPERIENCE

Chapter Four

*Find out about our inclusive tours and be inspired to add
a few extra days onto your trip to discover more*



Our Inclusive Tours create tailor-made experiences that include a cruise on our luxury river cruiser, plus an exclusive lakeside or beach stay, or wider forays into Cambodia, Laos and Thailand, where we have authentic Belmond hotels. We can also organise sightseeing options or culturally themed stays in cities and resorts before or after your cruise. All domestic flights, transfers and experienced guides are included.

HIGHLIGHTS OF YANGON

Explore Yangon, Myanmar's former capital, known as the "Garden of the East"

Admire the diamond-encrusted stupa of the sacred Shwedagon Pagoda, or explore the bustling Bogyoke Aung San Market, a treasure trove of lacquerware, tapestries, woodcarvings, silverware and jewellery.

Intrepid travellers can visit, on an overnight extension, the remarkable Golden Rock, a gold-leaf-covered boulder topped with a pagoda on a cliff edge. Extend the visit to include more nights in the Southern Mon State region.

If you're visiting Yangon, we can organise a stay at the luxury **Belmond Governor's Residence**, a colonial-style teak mansion in Yangon's leafy Embassy Quarter. Cool off in the fan-shaped pool, sip iced cocktails in the Kipling Bar and dine on Asian and European cuisine in the Mandalay Restaurant.

belmond.com/roadtomandalay



THE COLONIAL-STYLE SPLENDOR OF BELMOND GOVERNOR'S RESIDENCE



KOH SAMUI HAS TURQUOISE WATERS AND PRISTINE BEACHES

BEACH BREAKS

Combine your cruise with a relaxing spell on a glorious beach in Ngapali, Koh Samui or Bali, and let us customise your itinerary

Myanmar's most famous beach, **Ngapali**, is totally unspoilt. It's the perfect place to relax under a palm tree or stroll along the sandy beaches. Swim or snorkel in clear waters or go fishing.

Stay in one of our carefully selected hotels. The Ngapali Bay Villas & Spa, set among coconut palms, is beside Ngapali beach. The Amara Ocean Resort's 28 luxury bungalows overlook the beach in a palm grove. We also recommend Sandoway Resort.

A short flight from Bangkok, the

Thai island of **Koh Samui** has turquoise waters and pristine sands. Stay in a beautiful villa at **Belmond Napasai** to enjoy its private beach and shaded gardens or to explore Ang Thong National Marine Park.

The magical Indonesian island of **Bali** is also renowned for its sandy beaches and crystal-clear coves. Stay at **Belmond Jimbaran Puri**, where each villa has a private pool beside one of the island's best beaches and dine on the sands as the sun goes down.



INLE LAKE IS RENOWNED FOR ITS ROWERS AND FLOATING VILLAGES

INLE LAKE

Escape to Myanmar's magical freshwater lake and discover the scenic beauty and rich cultural heritage of the region

This beautiful, highland lake in the Shan Plateau of eastern Myanmar is home to diverse ethnic groups, including the famous Intha leg rowers, who have a distinct style of rowing with one leg. The lake is renowned for its traditional floating villages, gardens and water hyacinth, while the shoreline is dotted with ancient pagodas and island-bound monasteries, markets, artisan workshops and wildlife reserves. Experience the former hill station at Kalaw or the impressive Pindaya Caves filled with

8,000 Buddha statues. Our extensions include accommodation, your own personal guide and touring by boat, as well as your flights and transfers.

Stay at Inle Princess Resort, located on the lake's eastern edge. This secluded retreat comprises a cluster of traditional wooden and bamboo chalets with tranquil views across the water and towards the blue-peaked Shan Hills. Other suggestions for accommodation include Villa Inle Resort and Aureum Inle Resort & Spa.

belmond.com/roadtomandalay



DISCOVER THE RESTORED PAGODAS
DOTTED AROUND INLE LAKE

OUT AND ABOUT IN MYANMAR

We can also arrange a selection of excursions taking in one or more attractions

As Myanmar opens to the world, discover more with Belmond during a pre- or post-cruise tour. Enjoy trekking through the farmlands of Loikaw, the home of the ethnic Padaung, or a visit to an elephant conservation camp. In the Mon and Kayah States, experience the beauty of the

natural landscapes near Hpa-An and visit the seaside town of Mawlamyine. Let the mountains of Mrauk Oo captivate you or charter a private yacht and experience the tropical paradise of the Mergui Archipelago, a region of hundreds of uninhabited islands near the Thai border.



ANGKOR WAT, CAMBODIA

CAMBODIA AND LAOS

Visit Cambodia, home of the Angkor temple complex, or the UNESCO World Heritage town of Luang Prabang in Laos

Cambodia offers fine architecture along with unspoiled jungles and mountains, as well as the stunning complex of Angkor Wat with more than 100 temples, shrines and pagodas. Enjoy the intimacy of nearby **Belmond La Résidence d'Angkor** on the banks of the Siem Reap River.

Largely untouched by tourism, Laos boasts stunning landscapes and a rich

cultural heritage. The ancient town of Luang Prabang has traditional Lao and European colonial buildings, decorated with gilded stuccos and mirrored mosaics, among mountain scenery and lush gardens. While there, stay at the spacious **Belmond La Résidence Phou Vao**, overlooking the Mekong and Nam Khan rivers, with mountain views.

VOYAGES BY LAND AND RIVER

Combine the best of land and river travel with our two river cruisers in Myanmar and our train

The **Eastern & Oriental Express** travels between Singapore and Bangkok through Malaysia and Thailand, blending unrivalled onboard comfort with vistas of jungle-clad hills, ancient temples and lush paddy fields. You can combine a journey on the train with a variety of cruises on either **Belmond Road to Mandalay** or her sister ship

Belmond Orcaella, which glides along the Chindwin and Ayeyarwady Rivers with only 50 guests on board.

Choose from two- to 12-night cruises and add three to five nights travelling overland on the Eastern & Oriental Express. Stay at the leafy **Belmond Governor's Residence** in Yangon to catch your breath between adventures.

GUESTS ENJOYING THE VIEW FROM
THE EASTERN & ORIENTAL EXPRESS

BANGKOK AND SINGAPORE

Complement your relaxing cruise with the excitement of the big city. Choose your destination and we can arrange the rest

Bangkok, capital of Thailand, boasts attractions such as the Grand Palace, the Floating Market and the gigantic reclining Buddha. Other sights include the Robot Building, the three-headed elephant statue and the so-called "David Beckham Temple".

During your stay, we recommend the Mandarin Oriental Bangkok. Overlooking the Chao Phraya River, it is renowned for impeccable service and superb cuisine. Or see how luxury meets sophisticated Thai charm at The Peninsula, Bangkok, where guests enjoy exquisite riverside dining and a three-tiered pool. Vibrant Singapore is known for shopping — from the designer stores along Orchard Road to the antique shops in Chinatown — but is also home to a delicious dining scene and stunning parks. Don't miss the futuristic "Supertrees" in the Gardens by the Bay.

We recommend you stay at the famous Raffles Hotel, housed in a beautiful colonial building and where the Singapore Sling was invented. Alternatively, enjoy a location in the heart of the city at The St Regis, Singapore, which also houses one of Asia's finest private art collections.



FABULOUS HOTELS

LEGENDARY TRAINS

LEISURELY RIVER CRUISES

INSPIRING SAFARIS

BOOKING CONDITIONS

Our booking conditions apply to the trips described in this brochure. These conditions are available on request by calling your nearest Reservation Office from the following locations:
 UK: 0845 077 2222 +44 (0)203 117 1300
 US: +1 800 524 2420 (toll free)
 Singapore: +65 6395 0678
 or online: belmond.com/termsandconditions

Our booking conditions contain important limitations and exclusions of liability. Please read them before we confirm your booking. Adequate travel insurance is vital. Details of a policy suitable to cover the arrangements you book are available from an advisor at RHG Insurance Brokers on +44 (0)1438 345714 or +44 (0)1438 345719 (please quote "VSOE Travel" when calling). We provide financial security for flight-inclusive Packages (a "Package" exists if you book a pre-arranged combination of at least two of the following components when sold or offered for sale at an inclusive price and when the service covers a period of more than 24 hours or includes overnight accommodation: (a) transport; (b) accommodation; (c) other tourist services not ancillary to transport or accommodation and accounting for a significant proportion of the Package) and ATOL protected flights by way of a bond held by the Civil Aviation Authority under ATOL number 3141.

Your Financial Protection: when you buy an ATOL protected flight or flight inclusive holiday from us you will receive an ATOL Certificate. This

lists what is financially protected, where you can get information on what this means for you and who to contact if things go wrong.

We, or the suppliers identified on your ATOL Certificate, will provide you with the services listed on the ATOL Certificate (or a suitable alternative). In some cases, where neither we nor the supplier are able to do so for reasons of insolvency, an alternative ATOL holder may provide you with the services you have bought or a suitable alternative (at no extra cost to you). You agree to accept that in those circumstances the alternative ATOL holder will perform those obligations and you agree to pay any money outstanding to be paid by you under your contract to that alternative ATOL holder. However, you also agree that in some cases it will not be possible to appoint an alternative ATOL holder, in which case you will be entitled to make a claim under the ATOL scheme (or your credit card issuer where applicable).

If we, or the suppliers identified on your ATOL Certificate, are unable to provide the services listed (or a suitable alternative, through an alternative ATOL holder or otherwise) for reasons of insolvency, the Trustees of the Air Travel Trust may make a payment to (or confer a benefit on) you under the ATOL scheme. You agree that in return for such a payment or benefit you assign absolutely to those Trustees any claims which you have or may have arising out of or relating to the non-provision of the services, including any claim against us, the travel agent (or your credit card issuer where applicable).

You also agree that any such claims may be re-assigned to another body, if that other body has paid sums you have claimed under the ATOL scheme.

Not all holiday or travel services offered and sold by us will be protected by the ATOL scheme. Protection for all Packages not including flights is provided by means of a separate trust account in which all monies paid to us in respect of a Package will be held until the Package in question has been completely performed. Non-Package arrangements and arrangements not booked or departing from the UK are not protected by these arrangements.

On certain trips a minimum number of persons is required for the tour to take place. We will notify passengers at least 56 days before departure if a trip is cancelled for this reason. The applicable deposit (15% unless otherwise stated) must be paid to us when you book (or if booking within 56 days of departure, full payment must be made on booking).

If there are fewer than 12 passengers in your party, and if you have made your booking more than 56 days before departure and have paid a deposit to secure your booking, the balance of the cost of your arrangements (including any applicable surcharge) is due not less than 56 days prior to scheduled departure. If there are 12 or more passengers in your party, payments must be made as follows: 15% of the cost of your arrangements is payable on booking, a further 35% of such cost (including any applicable surcharge) is due 90 days before departure (if your booking is made between 90 and 56 days before departure).

If your booking is made less than 56 days before departure, you will be required to pay the entire cost of your arrangements at the time of your booking. If we do not receive (in cleared funds) the balance in full and on time, we reserve the right to treat your booking as cancelled by you, in which case cancellation charges will become payable. Cancellation charges apply in the event you or any member of your party cancels a confirmed booking. These charges will increase the closer to your departure date that you notify us of a cancellation.

We regret we are unable to offer you any assistance if you are delayed at the outward or homeward points of departure. Non-UK passport holders, including other EU nationals, should obtain up-to-date advice on passport and visa requirements from the Embassy, High Commission or Consulate of your destination or country(ies) through which they are travelling.

We reserve the right to amend the price of unsold trips at any time.

Venice Simplon-Orient-Express Limited.
 Registered office: Shackleton House,
 4 Battle Bridge Lane, London SE1 2HP.

Registered in England and Wales
 No. 1551659 © 2016,
 Belmond Management Limited.

All details are correct at time of going to print. Images used for illustration purposes only.

Many of the flights and flight-inclusive holidays in this brochure are financially protected by the ATOL scheme. But ATOL protection does not apply to all holiday and travel services listed in this brochure. Please ask us to confirm what protection applies to your booking. If you do not receive an ATOL Certificate then the booking will not be ATOL protected. If you do receive an ATOL Certificate but parts of your trip are not listed on it, those parts will not be ATOL protected. Please see our booking conditions for information. For information about financial protection and the ATOL Certificate see atol.org.uk/ATOLCertificate

