



GOVERNOR'S RESIDENCE

A BELMOND HOTEL
YANGON

Welcome to Governor's Residence

Enter a city where
the past is alive.
History plays out
across Yangon's
colourful streets

Discover Myanmar

"This is Burma," wrote Rudyard Kipling, "and it is unlike any land you know about." The same sense of wonder is invoked at Governor's Residence

To venture to Myanmar is to take the the road less travelled. Recent history has left the country closed off from the world and relatively untouched. Today visitors can discover vibrant cities, blissful beaches and resplendent Buddhist temples - the hallmark of this sacred land. Arrive at Yangon International Airport and you'll be greeted by a sign that reads: "Welcome to Myanmar - The Golden Country".

Perched on the banks of the vast Yangon River, Yangon is Myanmar's largest city. Here, past and present live in harmony. Fin-de-siècle architecture rubs shoulders with modern buildings, roads circle majestic temples. Against this vibrant backdrop, the gentle Burmese people go about their daily lives.

In the leafy Embassy Quarter, Governor's Residence offers an idyllic escape. Dating from the 1920s, this mansion is a relic from a romantic era in which colonial grandeur is married with Burmese beauty. Set amid tropical gardens, the hotel is especially magical at sunset. After a day exploring, take time to reflect in the balmy evening air.





*Golden stupas reach into
a diffuse sky as the majestic
Yangon River carves its path.*



Uncover Yangon

Yangon is a city of change: historical splendour and thriving modernity collide on its intriguing streets. A kaleidoscope of colour and life awaits

Once the capital of Myanmar, Yangon – formerly Rangoon – remains the country's stronghold of commercial and cultural life. Its majestic past still manifests in its colonial-style buildings and deeply religious society. Gilded pagodas glint in the golden sunrise while lines of burgundy-robed monks thread along the streets. Seeing the golden Shwedagon Pagoda at sunrise is a "pinch me" moment.

There are few better ways to tap into the energy of this city than wandering its colourful streets. Known as the Garden City of the East, Yangon is alive with leafy public parks that are perfect for a sedate stroll. Admire heritage buildings or wander around local marketplaces as traders haul sackfuls of cabbages and shoppers barter, their bags laden with groceries.

In recent years, Yangon has come to the fore as the most exciting place in Myanmar. As the country opens up to the world, so artists and investors have flooded this city with new restaurants, bars, shops and hubs of creativity. This is a place on the cusp of change, where the synergy between past and present is tangible.



A Warm Welcome

Escape the hubbub of the city and be transported to a tropical oasis. Our haven of bygone colonial luxury offers respite from the world beyond. Mingalaba...

A guest's arrival at Governor's Residence is heralded by a gong, such is the ceremony of a welcome here. Pass along a teak walkway as you make your way through tranquil gardens threaded with lotus ponds. To arrive at our 1920s mansion is to step back into a slower time; wraparound verandas are adorned with a gingerbread-style trim.

Once home of the Kaya States' Governor, the hotel is history come to life - and you're here to be part of it. Within our walls the elegance of a long-gone era mingles with Myanmar's rich beauty and culture. Rooms adorned with carved teak, silk, crisp linens and mesmerising local artworks are awash with light.

Evenings here announce themselves softly, with the fragrance of Myanmar's exquisite flowers on the breeze. Breathe deeply and inhale the scent of orchids, red torch ginger and the native amherstia nobilis - known here as Queen of the flowering trees. These are moments of utter bliss.



Discover more about what makes our hotel unique. Take a look inside our walls at belmond.com/governorsresidence





Your Suite Escape

Our rooms are your personal sanctuary where old-world elegance meets modern indulgence. Retreat into bliss after a day's adventures

Rooms

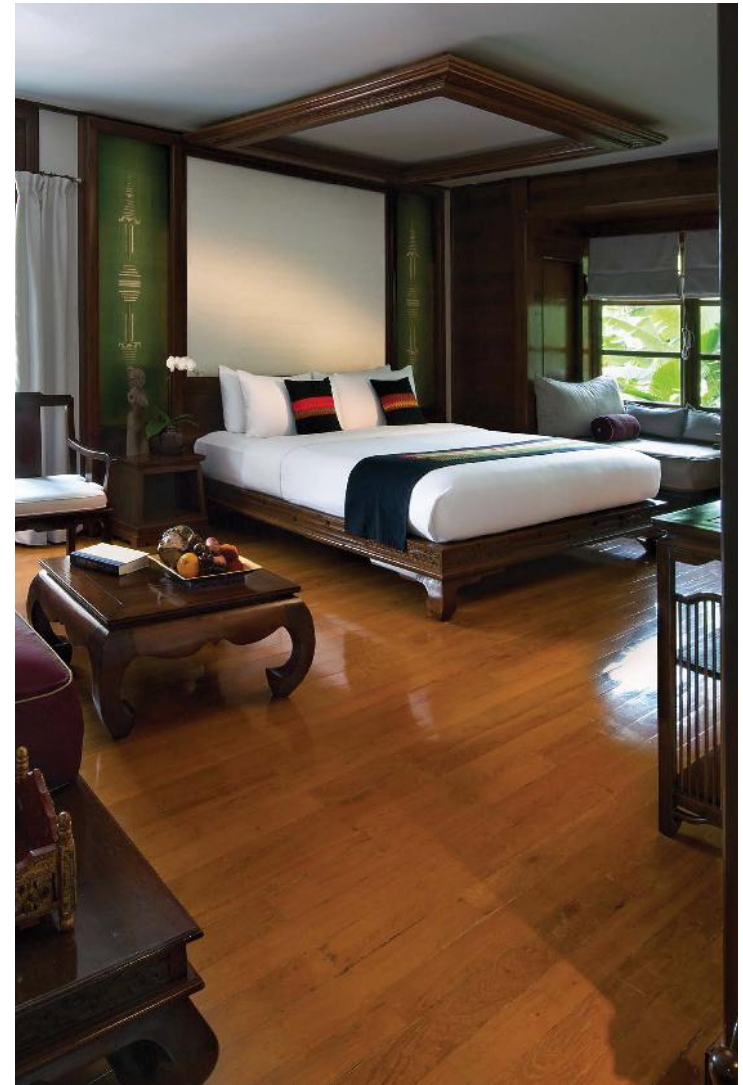
Across our accommodations, intricate teak carvings and delicate silks nod to Yangon's heritage while contemporary luxuries – an entertainment system, bathrobes, a mini bar, complimentary fruits – offer all the comforts of home. With double or twin beds, our **Deluxe Rooms** and **Deluxe Garden View Rooms** comfortably house two people, with an extra bed available for a third. After sightseeing, there's little so relaxing as a dip in the large terrazzo bathtub.

Suites

Spacious and exquisitely furnished, these retreats are the last word in luxury. **Junior Suites** overlook a private lotus garden while our **Two Bedroom Junior Suites** are ideal for groups or families, accommodating as many as four adults.

Governor's Rooms

To stay in a Governor's Room is to stay in Yangon's finest accommodation. A hand-carved bed takes centre stage. Trace silk-panelled walls to your spacious bathroom or take a seat at your writing desk, ideal for penning postcards. As the sun sets, raise a toast on your verdant veranda.



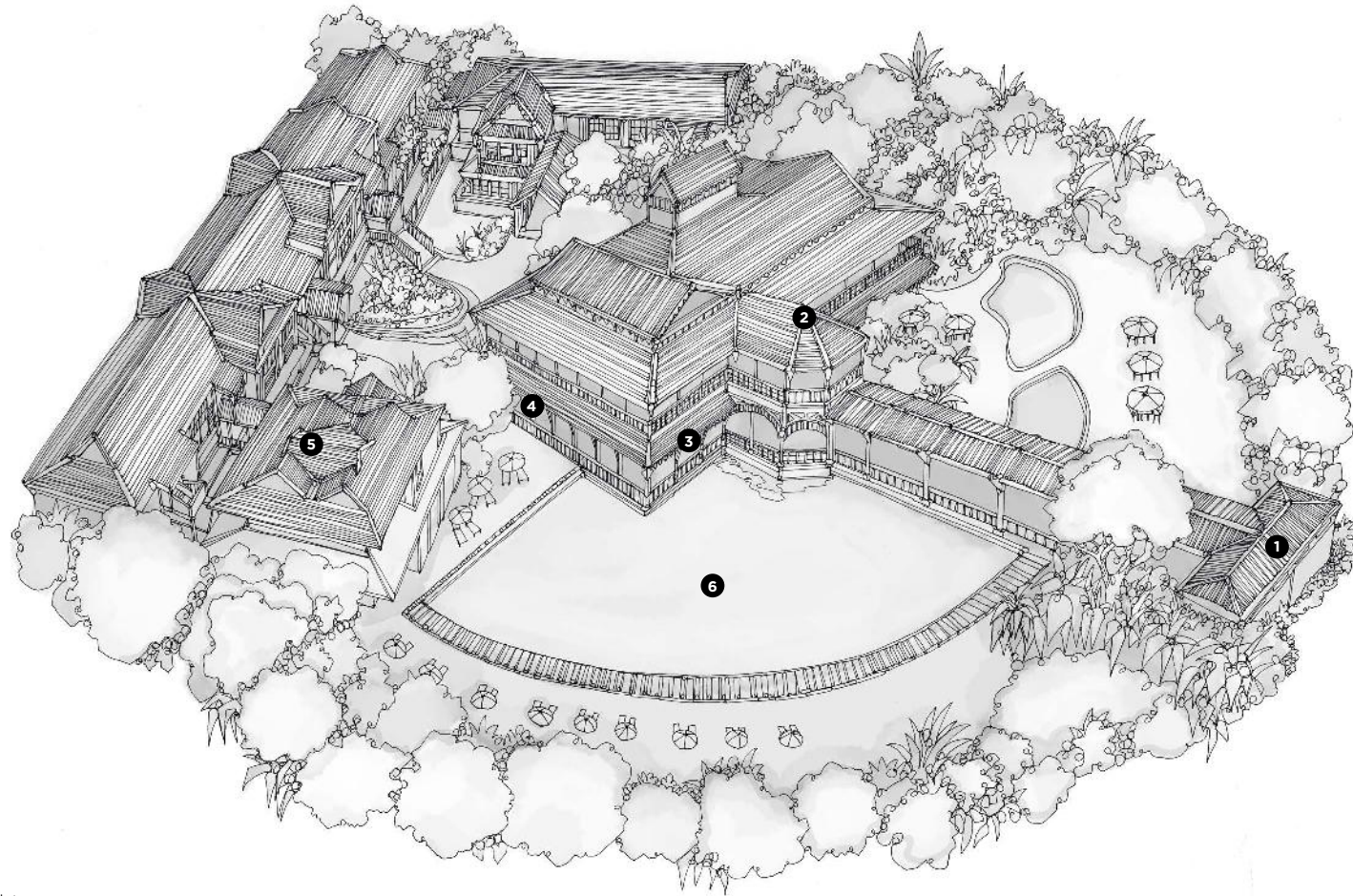
Within Our Walls

Governor's Residence puts you in prime position to explore Yangon. Yet in our tropical oasis, guests are spirited away from everyday

There's a pervading sense of peace in this 1920s mansion. From beautiful teak accents to the tranquil fan-shaped pool, every detail will take your breath away. Regal peacocks strut around the lawns, at home in the gardens. Peer into the ponds and you'll likely spot turtles and colourful koi fish.

Throughout the hotel, your wellness is our priority. Whether relaxing in our spa or dining on nutritious cuisine, practicing yoga or enjoying a moment's peace in a secluded hideaway, this is the place to refresh body and soul. Stretch out on a sunbed by our pool, where Burmese parasols are reflected in the deep turquoise water. Peruse a book from our library; a waiter will bring a lemongrass iced tea. Later, pick up a memento of local art, Burmese pearls or rich fabrics from our Boutique.

As the sun makes its curtain call on the horizon, the hotel is bathed in a certain magic. Dine by lantern-light cocooned in the balmy evening air or perhaps savour a Mandalay Sour under the stars.

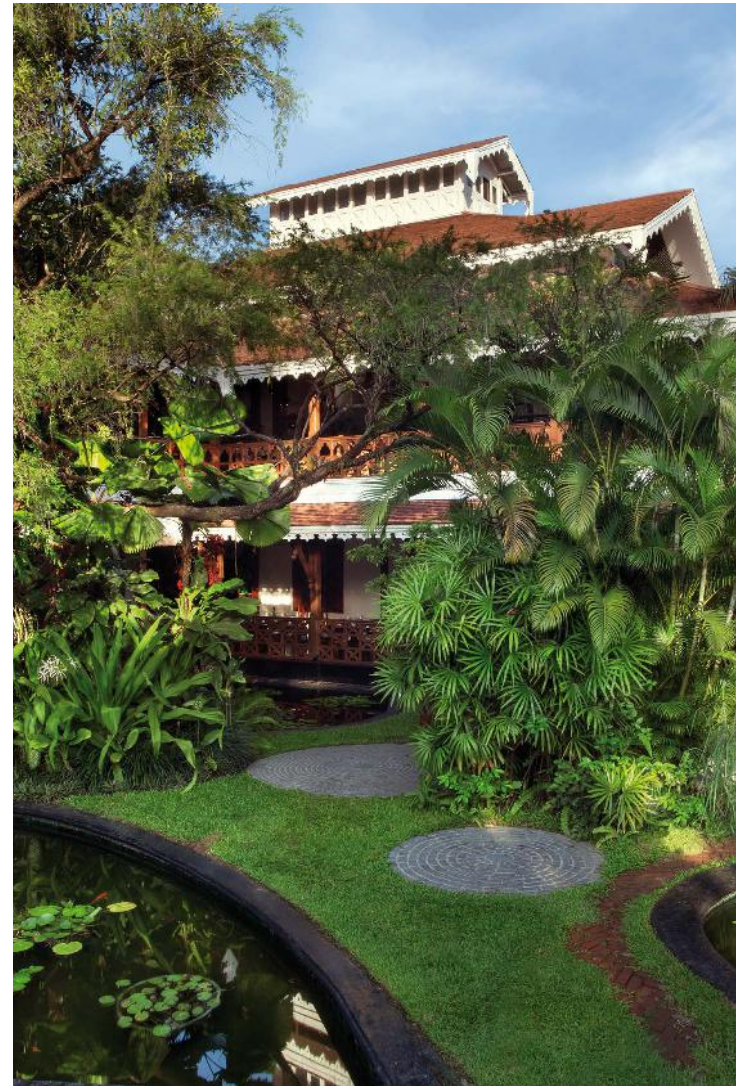


i

Peek into our world of fine dining and unforgettable experiences at [belmond.com/governorsresidence](https://www.belmond.com/governorsresidence)

- 1** Lobby
- 2** Mindon Lounge
- 3** Mandalay Restaurant
- 4** Kipling Bar
- 5** The Governor's Oasis Spa
- 6** Swimming Pool





Memorable Dining

Exotic delicacies and globe-spanning flavours delight. Cocktails are given an Asian twist. Whatever the hour, each bite transports you on a gastronomic voyage

The alluring scent of spices draws guests to Mandalay Restaurant where local produce is showcased across traditional Burmese dishes. Take breakfast on the veranda here, to the delicate refrain of a harp. Later sample smoked Myanmar catfish, a salad of banana blossoms or, for the sweet-toothed, tamarind candies.

Peckish? Our Governor's Gourmet Shop offers a decadent array of cakes, tarts and daily sweets - an apt accompaniment to tea on the poolside terrace. Alternatively, be transported to a bygone era in The Kipling Bar, where guests can refresh with iced tea, chilled beer or something altogether more indulgent.

The Burmese Curry Table offers a true taste of Myanmar, with a rainbow of fragrant local dishes served buffet-style over authentic charcoal burners. Noodles, curries, sticky rice and freshly grilled dishes are best enjoyed beneath Yangon's diffuse sky. Come evening, take a seat in the colonial-style Mindon Lounge and peruse the city's largest malt whisky and rum selection alongside Cuban cigars. Out on the star-lit terrace, the flower-scented breeze calls for our signature Governor's Collins cocktail.



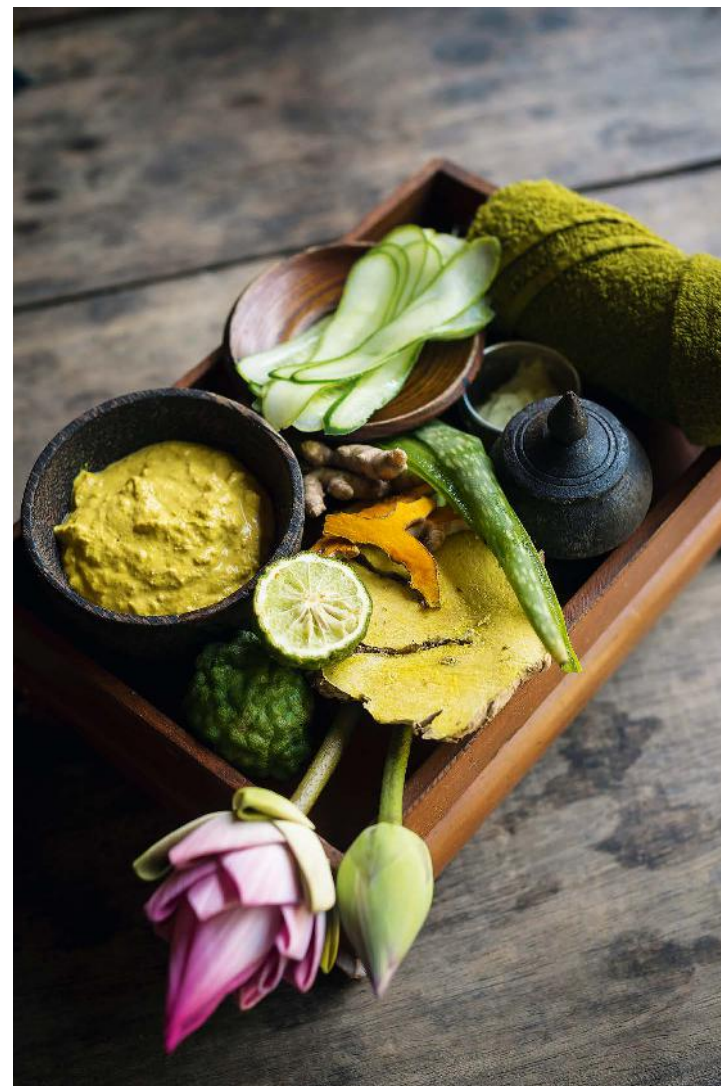
The Governor's Oasis

*Channel the healing energy of this sacred land.
After the excitement of exploring Yangon, now
it's time to nurture mind, body and soul*

Step into a world of botanical bliss at Myanmar's most exclusive spa. Driven by a holistic ethos, we use all-natural, organic scrubs, balms and essential oils that make the most of nature's bounty and set you on the path to wellbeing. Ancient healing practices are applied with modern understanding, leaving you feeling relaxed and rebalanced.

Realign the body's rhythm with our Chakra Back Treatment or detoxify with a Rainforest Rejuvenation facial therapy. Our signature Ky Nye Treatment promises to restore your vitality. This Tibetan practice employs aromatic oils, hot herb poultices, cupping and acupressure to bring the five elements – earth, water, fire, air, space – into harmony. After a finishing touch? We offer manicures and pedicures too.

Savour treatments solo or share the experience by opting for a couple's treatment room. Alternatively, guests can truly absorb all the wonders of nature from our Garden Treatment Pavilion.



Unique Experiences

Guests needn't stray far from our walls to experience some of Yangon's finest culinary and cultural offerings

Myanmar Cooking Class

Peruse a local market brimming with exotic ingredients and flavours central to Myanmar cuisine. On your return, join one of our chefs as they uncover the region's most loved dishes. Later, sample your creations as part of a bountiful buffet lunch.

Art'ernoon Tea

Celebrate the creativity of this colourful country with our unique afternoon tea concept. Savour an array of sweets and savouries with Myanmar's finest loose leaf teas and a glass of rosé as you admire an exhibition by local artists. Artworks make a fitting memento, with proceeds going towards the Belmond Free Healthcare Clinic in Yangon.

Morning Yoga

Start the day afresh with a morning flow in our peaceful Mindon Lounge. Rise with the sun and join our expert yoga teacher as you practice asanas that harmonise body and mind.

Evening Activities

Each evening Governor's Residence comes to life with light entertainment. Challenge fellow guests to a croquet match on the lawn before exchanging tales of the day's adventure at one of our convivial cocktail parties. On Wednesdays, gather in the Mindon Lounge for Movie Night and enjoy our eclectic library of films that spans from blockbusters to documentaries that delve into Myanmar's history.



Special Occasions

Old-world elegance and rich Burmese beauty work in harmony to create the backdrop for unforgettable events. We make your dream celebration a reality

Planning a romantic getaway, a milestone occasion or a stand-out conference? Governor's Residence sets the stage for a trip to remember. Our charming facilities and thoughtful service ensure that intimate celebrations and those with as many as 150 guests are a spectacular success. Should you desire, the whole hotel can reserved exclusively for your use.

Sit down to a sumptuous banquet in the Mindon Lounge, enjoy an intimate meal at Mandalay Restaurant or opt for a cosy cocktail party at the Kipling Bar. Live out your dreams with a ceremony surrounded by loved ones in our palm-fringed gardens. Bespoke menus, entertainment and decoration can be tailored to suit your tastes.

In town for business? Our meeting rooms and business centre are equipped with all the tools necessary to ignite your next bright spark and impress clients. Wifi comes as standard, as does stationery, sound systems, flip boards, projectors and refreshments. At the end of a day's meetings, there's little so inviting as a cooling dip in our fan-shaped swimming pool.



Out & About

Governor's Residence is ideal for guests wishing to explore. Step beyond our threshold and be immersed in the sights and sounds of this vibrant city

Yangon is a place to let your curiosity off the leash. Visit stunning places of worship or admire diverse architecture. Peruse markets laden with local produce, hand-woven fabrics and traditional snacks. We recommend lahpet, a pickled Burmese tea. While strolling the gardens surrounding Kandawgyi Lake, strike up a conversation with men dressed in longyi or women whose faces are smeared in thanaka - a preparation of bark that protects skin from the sun.

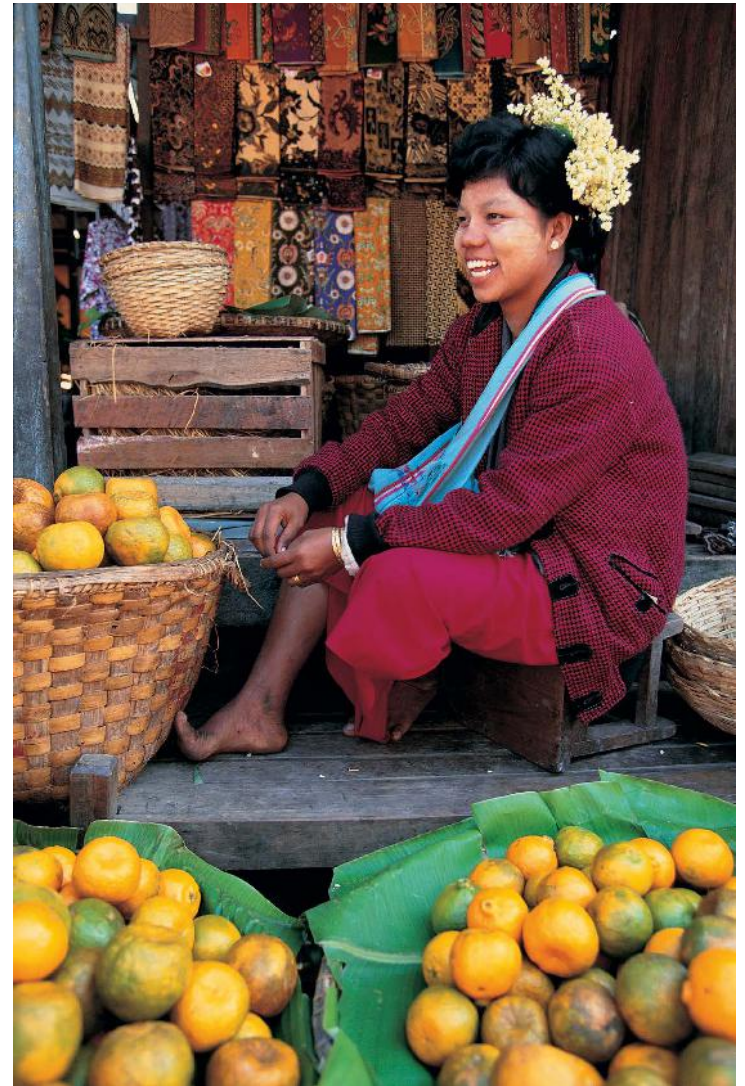
Of course, no visit to Yangon would be complete without the Shwedagon Pagoda with its gold roof encrusted with glittering diamonds and rubies. Just a short journey from the hotel, it's best visited at dawn when devotees make offerings as the city stirs. Later delve into life on the outskirts with a slow-paced trip on the Yangon Circular Railway.

While the city is steeped in ancient history, a sense of excitement permeates rapidly changing Yangon. The arts scene thrives alongside new restaurants, galleries and shops. Should you wish to have a private guide or driver for touring Myanmar, the Belmond Tour Desk will happily arrange a special experience for you.



Belmond holds the key to the wonders of Myanmar. Unlock your next adventure at belmond.com/governorsresidence





Discover More

Let us be your guide to the Garden City of the East. Our expert guides can make your dream trip a reality

Tours and Excursions

Unearth the region's diverse heritage in downtown Yangon or discover markets, arts and antiques on a shopping tour. Epicureans will adore our food-focused itinerary. Rise early for almsgiving at Kalaywa Monastery. Our experts guides will make sure you don't miss a thing.

Golf

Indulge in a round at the Pun Hlaing Golf Club, a short drive from the hotel. Our package includes a cart, use of a Powerbilt golf set, luxury transfer and a massage at the estate's Oasis Spa.

Pagodas

Grand, shimmering pagodas and stupas are an enduring image of Yangon. Visit the sacred Shwedagon Pagoda, plated in over 8,000 gold slabs. Or, head to the Botataung or Sule Pagodas, said to enshrine the hair of the Buddha.

Colourful Countryside Tour

Cross the Bago River to vibrant Syriam. Feel the wind in your hair in Kyauk-Tan as you take a boat to Ye-Le Pagoda, set on a small island. Be warned: it is said that ogres guard this mystical site.

Markets

Yangon's markets are a feast for the senses. Peruse handicrafts, sample delicacies and strike up a conversation with local people. Walk from the hotel to Bogyoke Aung San Market, among the city's most famous of its kind.



CHAPTER FOUR

Continue Your Asian Adventure

From golden pagodas to lively cities, lush jungles to sun-kissed beaches, Southeast Asia is a beguiling region of rich and colourful culture

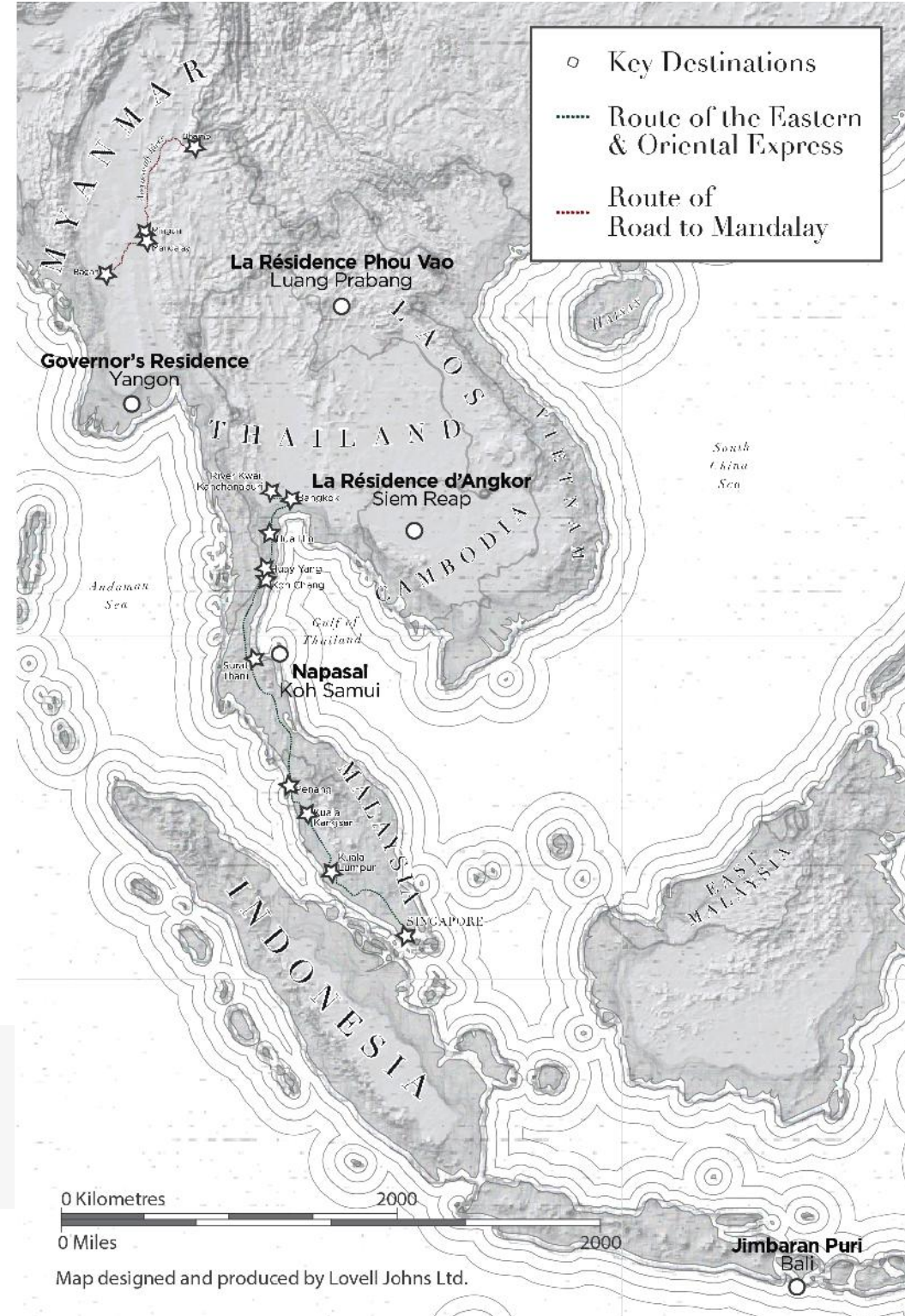
Southeast Asia marries the vibrancy of dynamic, modern cities with ancient monasteries, bejeweled temples and inspiring landscapes. Its glittering attractions include tea plantations, royal towns and coastal villages. From hawker stalls and markets to Michelin-starred restaurants and designer malls, this fabled region beckons the curious traveller.

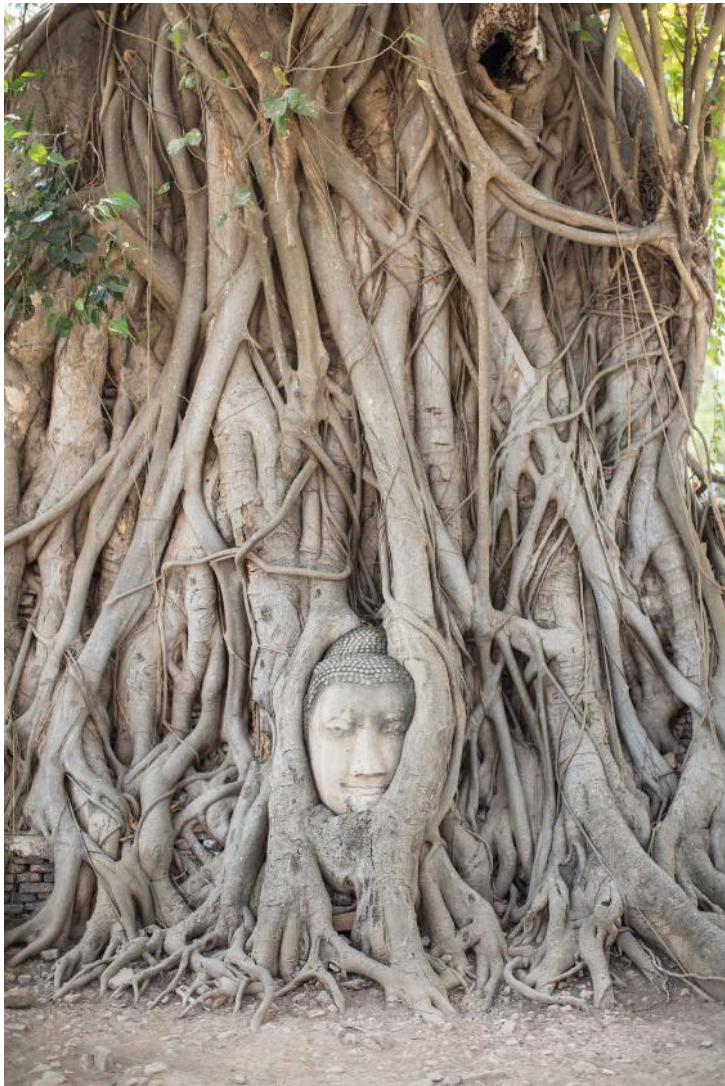
Thailand's colourful capital, Bangkok, sings with energy. Cruise along the River Kwai or discover the pristine island of Koh Samui. Dive into a melting-pot of cultures in Singapore before relaxing on Sentosa Island. In Myanmar, explore the storied ruins of Yangon or glide along the Ayeyarwady River to Mandalay. Take time to connect in spiritual Laos, cradled by waterfalls and mountains. Bali needs little introduction, with sugar-white beaches and peaceful temples framed by volcanoes, jungle and rice terraces.

To fully experience Southeast Asia is to reconnect with serenity and wonder. Each of our tailor-made itineraries, combining hotel stays, river cruises and rail journeys, offers a unique chance to explore this captivating region, safe in the knowledge that a luxurious haven is always close by.



Read on to discover more about our Asian escapes. For more information, visit belmond.com/asia





Road to Mandalay, A Belmond Boat, Myanmar

Find tranquility aboard this intimate river cruiser as you glide along the fabled Ayeyarwady, passing ancient pagodas and charming fishing villages

To step aboard Road to Mandalay is to voyage to the peaceful heart of rural Myanmar. On deck, sink into a rattan chair in our canopied lounge and sip a cocktail as sunlight dances on the water. Here practise yoga, cool off in our open-air pool or visit the spa and indulge. Fine, pan-Asian cuisine is followed by marionette shows, Burmese plays and riveting lectures. On carefully curated excursions, Myanmar's history comes to life as guests encounter amber-hued spice markets, lush green tea fields and saffron-robed monks as they wind their way through the countryside's mazy streets.



La Résidence d'Angkor, A Belmond Hotel, Siem Reap

Launch into an otherworldly Cambodian adventure at this tropical retreat where ancient Khmer traditions meet contemporary style

Millennium-old ruins rub shoulders with a vibrant entertainment scene in thriving Siem Reap. La Résidence d'Angkor is but a short journey from the temple of Angkor Wat, the city's crown jewel, and yet guests here feel as if a million miles away. Surrounded by bountiful gardens, this riverside oasis invites you to slow down and savour the serenity. Arranged around a beautiful courtyard, our suites are your personal haven with carved furnishings and jewel-toned silks. Unwind with traditional Cambodian therapies at our award-winning spa or dine on hawker cuisine. Belmond is the perfect launchpad for an immersive adventure.



La Résidence Phou Vao, A Belmond Hotel, Luang Prabang

A hilltop sanctuary on the rim of Luang Prabang, this serene hideaway boasts extraordinary vistas. Take time to relax before discovering the ancient capital

Laos boasts stunning landscapes and a rich cultural heritage. Here, the UNESCO World Heritage town of Luang Prabang blends decorative architecture with mountain scenery and frangipani-scented gardens. Guests in need of relaxation can find peace at La Résidence Phou Vao, where an infinity pool flows off a cliff edge and the award-winning Mekong Spa offers custom treatments using botanicals from organic gardens. Savour delightful French and Asian cuisine or take part in a spiritual ceremony. Every moment here is one to cherish.

Jimbaran Puri, A Belmond Hotel, Bali

Hemmed by jungle and lulled by the lap of the Indian Ocean, this idyllic retreat makes the most of Bali's sugar-white sands and crystal-clear coves

Arriving at Jimbaran Puri is like stumbling upon a secret garden. With local bamboo, teak and alang-alang thatching, a private swimming pool and a terrace, each luxury lodging is an ode to Balinese culture. Take a dip in the free-form pool as you soak up uninterrupted sea views or make the most of the resort's library, boutique and spa. Dine in one of our excellent restaurants such as Nelayan, where you can savour just-caught fish as you watch the sun sink beneath the water. Jimbaran Puri is Bali in its most pure state. Visit this spiritual heartland and leave feeling transformed.



Eastern & Oriental Express, A Belmond Train, Southeast Asia

At once leisurely and luxurious, intimate and eye-opening, the Eastern & Oriental Express train invites you to a world where travel and style are synonymous

To step on board the Eastern & Oriental Express is to enter a bygone era in which fine company, cocktails and delicious food are matched only by the luxurious cabins and spectacular views. As if on a film set, the tropical breeze tousles your hair on the open-deck Observation Car as dramatic scenery unfolds. Work up an appetite on a sightseeing excursion before pulling up a seat in our ornate Restaurant Cars, where eastern and western specialities delight diners. Later, join new-found friends for a drink in the Piano Bar car. This is where memories are made.



Napasai, A Belmond Hotel, Koh Samui

Caught between jungle and sea, these serene villas are your slice of Thai paradise. Wander our peaceful gardens and meet our resident water buffaloes

A short flight from Bangkok, Koh Samui is a lush island fringed by turquoise waters and pristine sands. Perched on its northern shore, Napasai's traditional villas are nestled among 17 acres of palm-shaded gardens. Enjoy our infinity pools, tennis courts and spa – a truly relaxing sanctuary. Adventure seekers can discover the natural wonders of Ang Thong National Marine Park, take boat trips or try snorkelling. Venture out to attractions such as the Big Buddha, or explore the jungle interior and waterfalls. For lovers of golf, there is an excellent hilltop course with outstanding views.



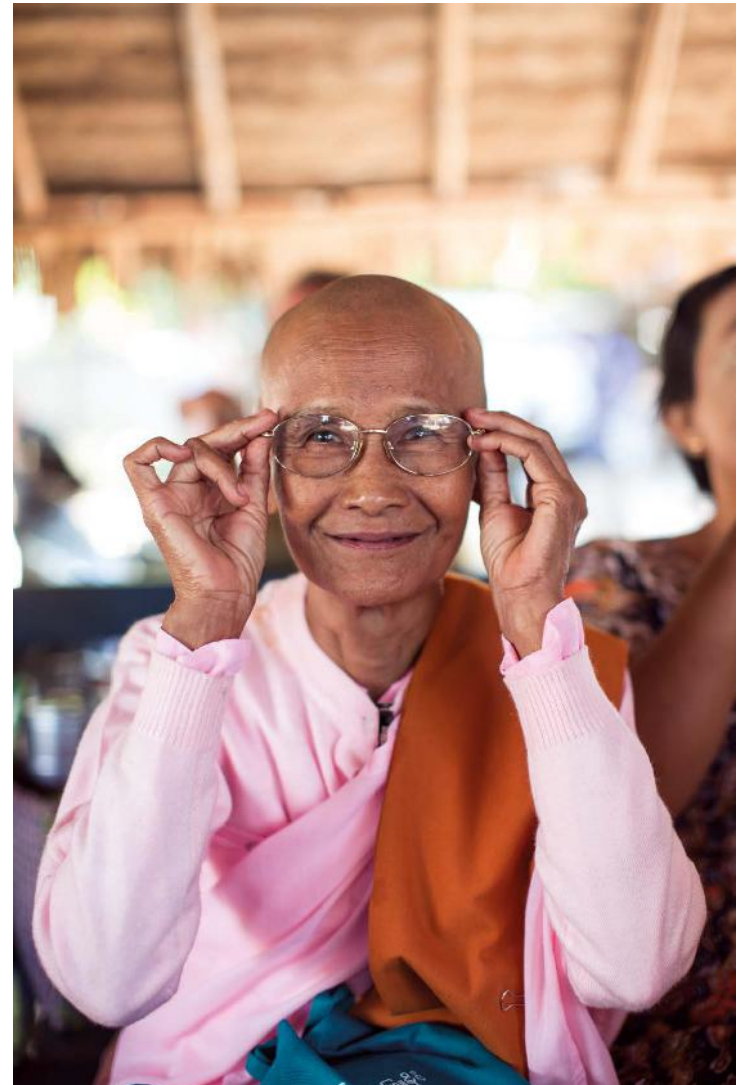
Supporting Our Community

Over the years, Governor's Residence has forged strong connections with the local community so your visit can be one that gives back

We believe that tourism should benefit not just travellers, but the places they visit too. That's why Belmond is driven by building strong relationships with – and opportunities for – the communities surrounding our hotels, trains and river cruises across the world.

We are immensely proud of the Belmond Myanmar Foundation, a non-profit organisation through which we aim to improve education and healthcare in the country. Over the past two decades, Belmond has overseen the development of more than 20 schools and orphanages, giving children a chance at a better start in life. Meanwhile our clinic in Bagan gives free medical aid and essential treatment to those in need.

At the hotel, dine with us and you'll be supporting disadvantaged students working in our restaurants. We support local food and beverage programme My Red Elephant, which provides cookery courses for young people from the Mary Chapman School for the Deaf. We also work with Shwe Sa Bwe, a restaurant training centre in Yangon, which offers people of modest means the chance to train for free.



Our Belmond World

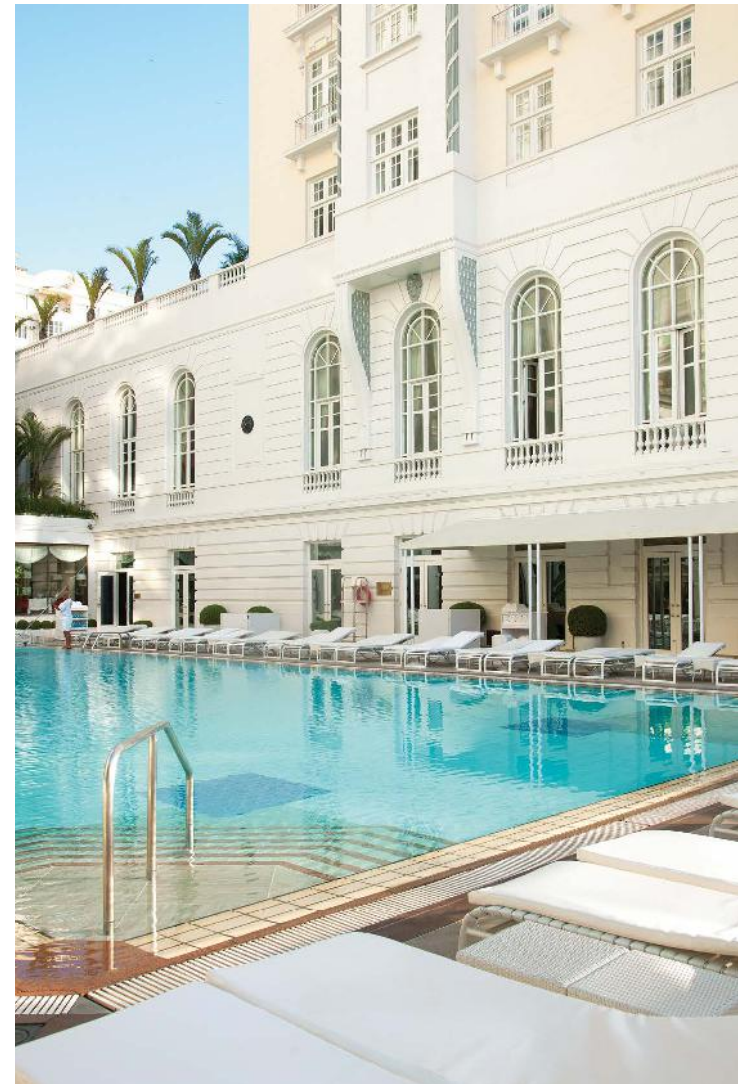
Having spent decades travelling the globe, Belmond invites you to join us for your next adventure. Transcend the everyday with inspiring retreats set among the world's most celebrated destinations.

Our legendary hotels, luxury train journeys, safari adventures and pioneering river cruises each have a story to tell. Join us as it unfolds.

HOTELS | TRAINS | RIVER CRUISES | JOURNEYS

[BELMOND.COM](https://www.belmond.com)

#TheArtOfBelmond





A peacock feather pattern against the blue-green colour of the bird's bright plumage enlivens this booklet's cover. Peacocks strut around our gardens and the hues of their fanned tails are captured everywhere from fabrics to the tilework of our pool. The dancing peacock, symbol of the Burmese monarch, once appeared on flags and coins and is steeped in local lore. It conjures up a story that continues to unfold

CONTACT US

Australia Tel: 1800 316 635

New Zealand Tel: 0800 440 497

China Tel (China North toll free): 108 007 142 374
(China South toll free): 108 001 402 395

Hong Kong Tel (toll-free): 800 906 756

Taiwan Tel: 00 801 127 829

Japan Tel (toll-free): 0066 3381 3732

South Korea Tel: 00 7981 4203 0099

Singapore Tel: 800 852 6206

Thailand Tel: 1800 012 145

Malaysia Tel (toll-free): 1800 818 595

Indonesia Tel: 00 1803 016 3099
or 00 7803 016 3099

Philippines Tel: 1800 1110 2323

India Tel: 0008 0004 01871

Email

reservations.asia@belmond.com