



BELMOND
EL ENCANTO
SANTA BARBARA



800 Alvarado Place, Santa Barbara, CA 93103 • +1 805 845 5800 • Fax: +1 805 456 0836
BELMOND.COM • reservations.elle@belmond.com



Belmond El Encanto, a *Forbes* Five-Star luxury hotel, has been meticulously restored to capture all the romance and glamour that endeared it to both the local Santa Barbara community and visitors alike.

Ninety-two quintessential, California-styled suites and bungalows dot the lush, terraced grounds featuring seven-acres of gloriously landscaped gardens with sweeping views of Santa Barbara and the Pacific Ocean.

Original architectural features have been lovingly restored, including the historic, trellis-lined Arbor and Lily Pond. Modern additions to the expansive outdoor zero-edge pool and a new beautifully appointed boutique spa enhance the journey for today's luxury-seeking guest.





ACCOMMODATIONS

Bungalows are spaced throughout the seven acre grounds and feature marble bathrooms with soaking tubs, rainforest showers, lighted makeup mirrors and dual wash basins.

NINE SUPERIOR BUNGALOWS 350 ft² (33 m²)

Every modern convenience is at your disposal as you revel in the comfort of this charming bungalow. You'll delight in the refined custom furnishings, from the luxurious king-size bed to the personally monogrammed pillows. Hardwood flooring and natural light exude a warm ambiance while garden views welcome you to a natural wonderland just outside your door. *Maximum two guests.*

19 DELUXE BUNGALOWS 450 ft² (42 m²)

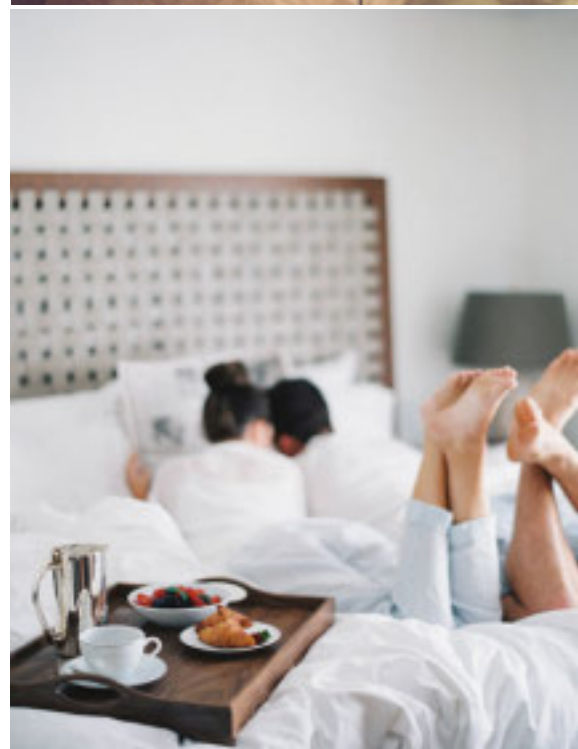
Drift into blissful sleep as you sink into the plush, king-size or two double beds with monogrammed pillows - just one of many bespoke touches in this enchanting hideaway. Authentic hardwood floors add to the charm and oversized windows invite the natural light in. Most Deluxe Bungalows offer a furnished patio with garden views, or charming fireplaces to set your evenings aglow. *Maximum two guests, four guests in double rooms.*

26 PREMIER BUNGALOWS 550 ft² (56 m²)

These spacious bungalows, each graced with elegant furnishings, monogrammed pillows, lovely hardwood floors and natural light. Many Premier Bungalows feature a patio or balcony with tranquil views of the verdant garden or Santa Barbara landscape. Choose from a king bed or two doubles. *Maximum of three guests when using a rollaway bed in king rooms, four guests in double rooms.*

16 DELUXE PREMIER BUNGALOWS 650 ft² (60 m²)

Revel in Belmond El Encanto's largest non-suite accommodations with approximately 650 square feet of casual elegance and the convenience of two double beds. Deluxe Premier Bungalows are situated throughout the seven-acre grounds and offer charming fireplaces as relaxing backdrops to warm evening conversations. Most also feature a private patio or balcony with tranquil views of the garden or landscape. *Maximum of three guests when using a rollaway bed in king rooms, four guests in double rooms.*



SUITES

FOUR SUPERIOR SUITES 550 ft² (56 m²)

These suites feature a large separate living room with beautiful French doors which lead into a private bedroom. Choose between a warming open-hearth fireplace or a patio with garden views. *Maximum three guests.*

EIGHT DELUXE SUITES 650 ft² (60 m²)

Nestled in a garden setting, these hideaways afford the ultimate in privacy and tranquility. Each of these two-room suites is appointed with one king-size bed, while some also include a sofa bed to accommodate additional guests. Some Deluxe Suites can connect to Deluxe Bungalow King. *Maximum three guests.*

FOUR PREMIER SUITES 650 ft² (60 m²)

Each Premier Bungalow Suite is appointed with one king-size bed, an exquisite fireplace and a separate spacious sitting area. These suites are a convenient choice for accommodating multiple guests, as some offer sofa beds. *Maximum three guests.*

TWO DELUXE PREMIER SUITE 800 ft² (74 m²)

Each of these spectacular suites is excitingly different and serves as a perfect romantic retreat. Located throughout the resort's pristine grounds, our Deluxe Premier Suites are appointed with a king-size bed, an exquisite fireplace and a separate spacious sitting area. You'll enjoy a private terrace, as well as sweeping views of Santa Barbara's coastline or the verdant garden. Deluxe Premier Suites also include sumptuous marble baths with heated stone floors, separate rainforest showers and dual washbasins. *Maximum three guests.*



SPECIALTY SUITES

OAK TREE SUITE 1,100 ft² (102 m²)

This 1,100 square foot suite exudes natural beauty, inspired by the magnificent oak trees that punctuate the grounds. It is a luxurious and sophisticated space, with French doors opening to a spacious garden courtyard with decorative fountain. Connect to a Premier Bungalow for additional space and comfort. Includes a kitchenette with a microwave, sink, induction cooker and mini fridge.

CAMELLIA SUITE 1,100 ft² (102 m²)

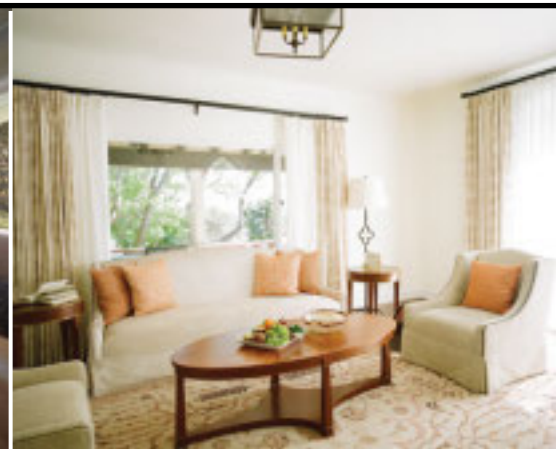
A spacious 1,100 square foot suite nestled amidst Belmond El Encanto's lush camellias. Revel in the warmth of the cozy fireplace or savor a romantic dinner in the dining room while admiring the Santa Barbara landscape. Connect to a Superior Suite and enjoy even more space for relaxation. Includes a kitchenette with a microwave, sink, induction cooker and mini fridge.

WISHING WELL SUITE 900 ft² (83 m²)

This beautiful 900 square foot suite captures the magic of the Wishing Well, where countless dreamers have made wishes. Escape to the private terrace, surrounded by cascading bougainvillea. Prepare cocktails in the kitchenette or unwind in front of the glowing fireplace. The Wishing Well Suite can connect to a Deluxe Bungalow to create a two-bedroom, self-contained residence. Includes a kitchenette with a microwave, sink and mini fridge.

VISTA SUITE 830 ft² (77 m²)

With 830 square feet of breathtaking views and modern luxuries, this charming suite is nestled in a quiet quarter of the resort's pristine grounds amidst a shaded grove of flourishing eucalyptus and palm trees. This elegant suite connects to a Premier Bungalow, creating a 1,430-square-foot glorious retreat—complete with a private terrace for enjoying unspoiled afternoons of quiet reverie.



ALL ACCOMODATIONS OFFER:

iPod dock and stereo

Large desk with two-line phone with voice mail

Iron and ironing board

Hair dryer

Lighted make-up mirror

ETRO bath amenities

Dual 11v-220v voltage

Climate control

Heated bathroom floors

Widescreen 42" LCD HDTV with premium channels

Personal safe large enough for a notebook PC

DAILY RESORT FEE INCLUDES:

High-speed wireless internet access

Courtesy transportation within a five mile radius, 8:00am - 9:45pm

Use of Faraday electric bicycles

Backyard games (horseshoe pitching, beanbag toss, lawn bowling)

Garden tours

Access to spa and fitness facilities

Entrance to scheduled fitness classes

In-room Nespresso coffee, bottled water and newspaper delivery

RESTAURANTS

THE DINING ROOM AND TERRACE

Dine in the elegant Dining Room, or delight in a romantic dinner under the stars on The Terrace. Either way you'll be treated to a spectacular gastronomic experience, featuring locally sourced, artisanal ingredients.

An innovative menu offers contemporary California-coastal cuisine, complemented with gracious service and a side of stunning Santa Barbara coastal views.

BREAKFAST:

Daily
7:00 - 10:30am

LUNCH:

Monday - Saturday
11:00am - 2:00pm

CORKAGE FEES:

\$35 each for the first two bottles
\$50 for the third bottle
\$75 for the fourth bottle

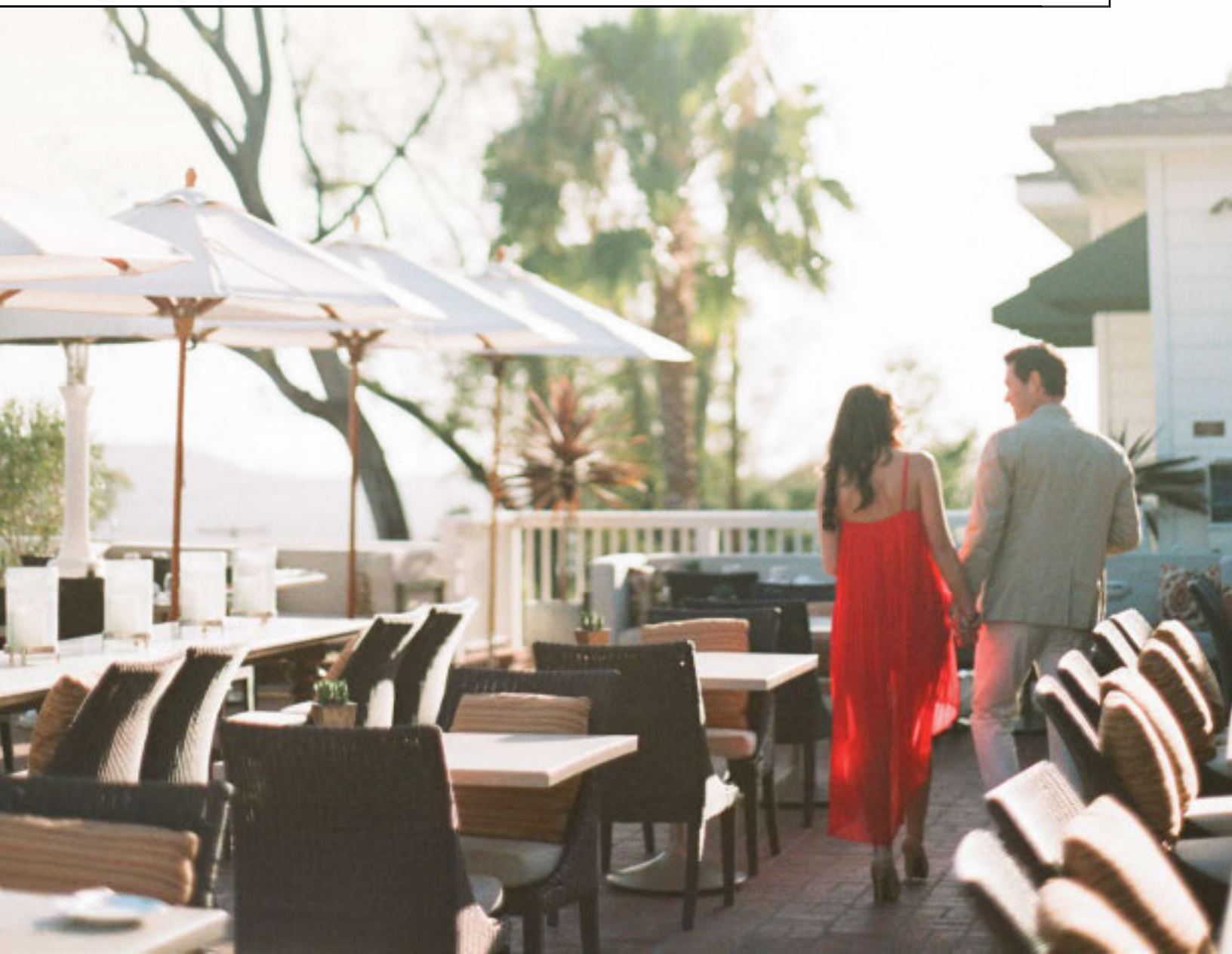
SUNDAY BRUNCH:

11:00am - 2:00pm

DINNER:

Daily
5:00 - 10:00pm

Please contact the Catering office for reservations for 11 or more.



THE LOUNGE

The Lounge is the ideal retreat for light dining or an elegant Afternoon Tea with friends. Delicately crafted breads and buns come filled with classic British combinations. Tempting scones and pastries will sweeten any afternoon.

LIVE ENTERTAINMENT

Monday - Saturday	Sunday
6:00 - 9:00pm	11:00am - 2:00pm

Afternoon Tea reservations must be made 24-hours in advance. Served Monday through Saturday excluding holidays, 2:00 - 4:00pm.

THE RIVIERA BAR

Meet friends or fellow travelers and linger over the wide range of wines, spirits and exciting cocktails in this lively hub. American bar food is elevated to new flavorful heights for those who wish to drop in for a quick meal.

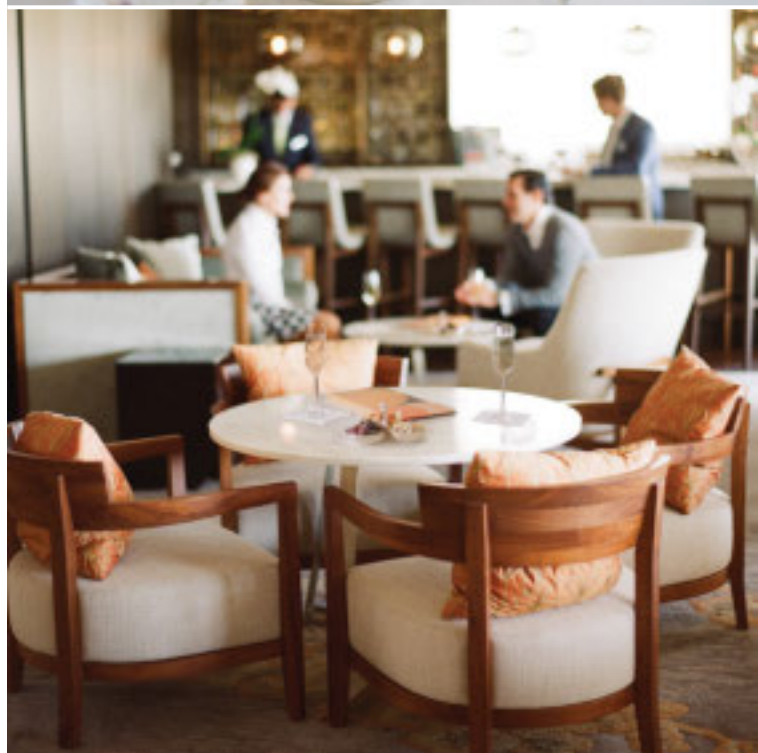
Sunday - Thursday	Friday and Saturday
11:00 am - 12:00am	11:00 am - 1:00am

THE WINE ROOM

Whether you're celebrating a special birthday, hosting a retirement dinner or just because, The Wine Room is the perfect place to gather for 2 to 14 guests.

Enjoy a custom menu, tailored by our executive chef, in the warm and intimate setting. Sip perfectly paired wines from local vineyards and beyond.

Pricing starts at \$150 per person for a four-course meal, with a \$2,000 minimum, excluding beverages.



POOLSIDE DINING

Lunch, snacks and cocktails are available year-round at the intimate, outdoor zero-edge pool. Room service is available 24-hours a day. Room service is subject to a 22% service charge, 7.75% sales tax and a \$5 delivery fee.

Complimentary morning coffee is served in the lobby daily
6:00 - 8:30am



HEALTH AND FITNESS

Full service health club with strength training and cardiovascular equipment and fitness classes.

6:00am - 10:00pm

The Fitness Studio is available to locals who have spa services Monday through Thursday, includes classes and use of equipment.

Zero-edge heated outdoor freshwater swimming pool with panoramic ocean views.

6:00am - 8:30pm

PERSONAL FITNESS CLASSES

Please reference the daily fitness schedule for class dates and times.

FIVE ELECTRIC FARADAY BIKES AVAILABLE FOR GUESTS

COMPLETE SPA SERVICES

Full-service spa with a range of treatments and services including a romantic couples treatment room, manicure/pedicure stations, dedicated facial suites, massage and wet rooms, private outdoor terrace and relaxation lounge.

Monday - Thursday
10:00am - 7:00pm

Friday
10:00am - 8:00pm

Saturday
9:00am - 8:00pm

Sunday
9:00am - 7:00pm



BUSINESS CENTER

Full business services are available through the concierge, including photocopying, faxing and boarding pass printing.

BOUTIQUE

The Signature Boutique features custom curated seasonal, luxury gift items including ETRO brand bath amenities, books, magazines, Belmond and Belmond El Encanto logo merchandise, snacks and sundry items.

LOCATION

9.5 miles (15 minutes) from Santa Barbara Airport (SBA)

100 miles (90 minutes) from Los Angeles Airport (LAX)

3 miles (10 minutes) from Santa Barbara Amtrak Station

5 minutes from State Street by car

1 mile from Old Mission Santa Barbara & Natural History Museum
(10 minutes by foot)

30 minutes from Santa Barbara wine country in Santa Ynez Valley

HOTEL POLICIES

Guest Check-In: 3:00pm

Guest Check-Out: 12:00pm

Cancellation Policy: Cancellation 72-hours prior to arrival is required to avoid one night's room fees and taxes.

Deposit/Guarantee: Credit card guarantee.

Third Person Fee: \$50 per night for guests 18 years of age and older.

Pet Policy: \$35 per pet, per day. No weight or breed restriction. Three pets max, per room. Pets are not allowed in pool or restaurant areas, with the exception of service animals.

Rollaway Beds: Allowed in all room types except Superior and Deluxe Bungalow and any upstairs rooms and suites. \$35 per night plus tax. Fee is in addition to third person fee if required.

Cribs: Standard cribs are complimentary in any room type.

Sofa Bed: Available in Deluxe Suites. \$35 per night plus tax. Fee is in addition to third person fee if required.

Child Policy: Children 17 years of age and under are free if using existing bedding. A rollaway bed fee applies if required. Cribs are complimentary and allowed in all room types.

Maximum Occupancy: Two people per bed, king or double. Two people per sofa bed and one person per rollaway bed. See rollaway bed policy above.

Early Departure: Subject to one night's room fees and taxes.

No Show: Subject to entire length of stay charge.

Tax and Service: 12% city tax, \$4.40 tourism tax per night and .195% California tourism assessment tax.

Group Bookings: Eight or more rooms is considered a group and should be directed to the Sales Department at 805 770 3540.



VISITOR INFORMATION

Currency: US Dollars

Voltage: 110v-220v outlets available

Time Zone: -3 from New York (Pacific Time)

Parking: Valet parking only, \$35 for overnight parking.

TRANSPORTATION

Santa Barbara Airport to Hotel: Private car \$135, Limousine, \$205, Taxi \$35-\$40

Los Angeles Airport to Hotel: Private car \$320, Limousine \$410, Taxi \$275

